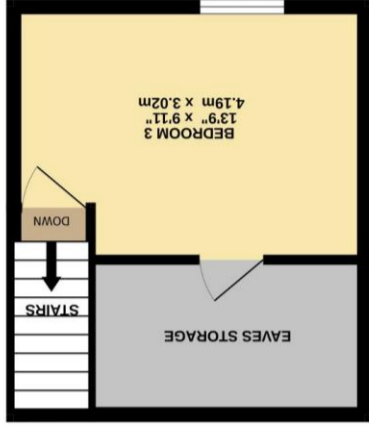
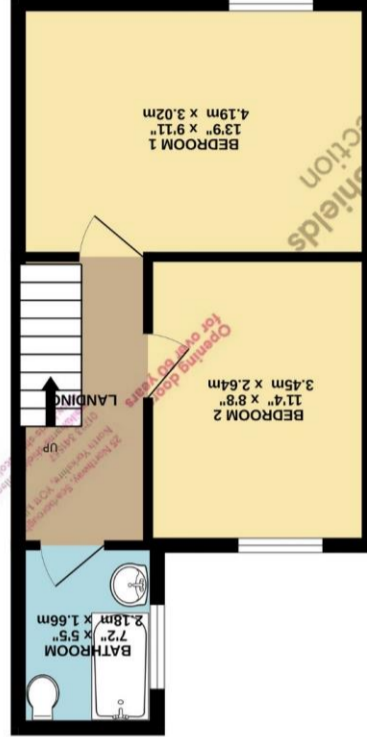


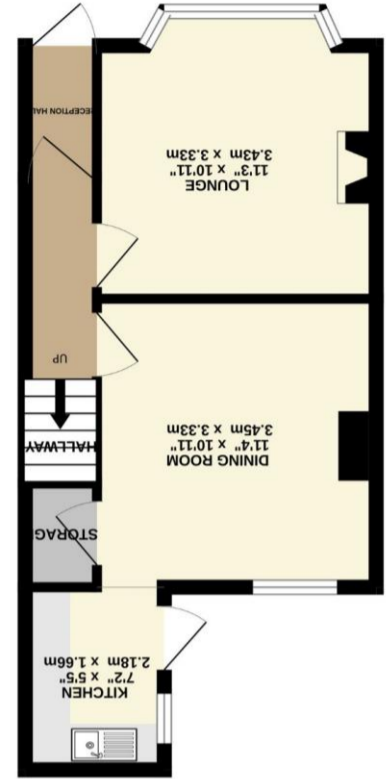
Whilst every attempt has been made to ensure the accuracy of the floorplan contained here, measurements of doors, windows, rooms and any other items are approximate and no responsibility is taken for any error, omission or mis-statement. This plan is for illustrative purposes only and should be used as such by any prospective purchaser. The services, systems and appliances shown have not been tested and no guarantee as to their operability or efficiency can be given.
 Made with Metropix ©2024



2ND FLOOR
 220 sq.ft. (20.4 sq.m.) approx.



1ST FLOOR
 331 sq.ft. (30.7 sq.m.) approx.



GROUND FLOOR
 333 sq.ft. (30.9 sq.m.) approx.



42 Commercial Street, Scarborough, YO12 5EW

Harris Shields
 Collection

A three bedroom inner terraced home.

- ✓ Inner Terraced Home
- ✓ No Forward Chain
- ✓ Three Bedrooms
- ✓ Two Reception Rooms
- ✓ Close To Amenities
- ✓ Double Glazed
- ✓ Gas Central Heating
- ✓ Over Three Floors

Guide Price £125,000

Harris Shields Collection

Harris Shields Collection, 25 Northway, Scarborough
North Yorkshire, YO11 1JH

01723 341557

mail@harris-shieldscollection.uk

<https://harris-shieldscollection.uk/>

Description

Nestled in this ever popular residential area close to Falsgrave Shopping Parade, Sainsburys Supermarket and Gladstone Road School and offered with no onward chain is this three bedroom inner terraced home. Of course the property comes equipped with gas central heating, UPVC double glazing and the accommodation briefly comprises; entrance hallway, bay fronted lounge with feature fireplace and gas fire, separate dining room, understairs cupboard, fitted kitchen with door to enclosed rear courtyard with outbuilding. On the first floor are two bedrooms and a bathroom. On the second floor is a further bedroom with eaves storage. Outside to the front is fore-courted. Council tax band B.



Additional Information

Council tax band B



Opening doors
for over 60 years

Harris Shields
Collection